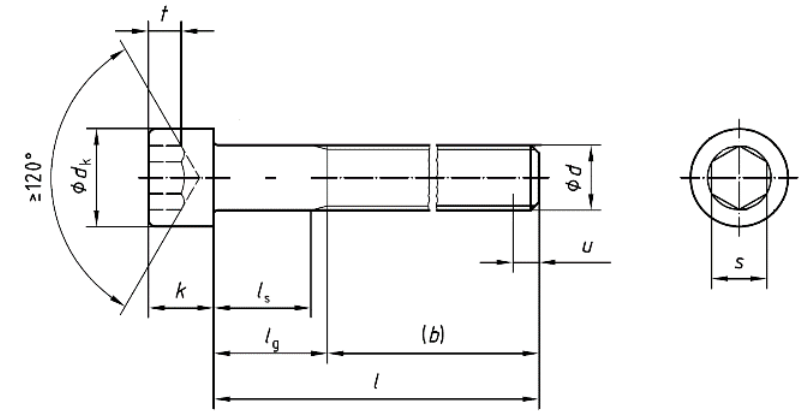


Name : Hexagon socket head cap screws
Description : SCREW HXS CAP STL 8,8 A2A (d)x(L)
Material : Property Class 8.8 According to ISO 898-1
Standard : ISO 4762
Coating : Zinc plated, Transparent passivated (Zn//An/T0 acc. to ISO 4042)
Prescribed Manufacturer : Fabory (See BCT aClass for order codes)
Class Documentation : [D000575869](#)



u ≤ 2xP where P is the pitch of the thread

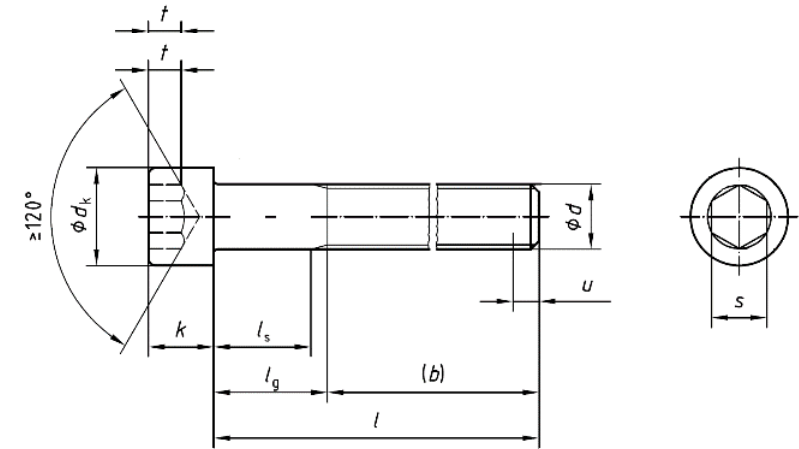
Table 1 Dimensions according to ISO 4762

Dimensions in millimeters

d (Thread)	M3	M4	M5	M6	M8	M10	M12	M16	M20	M24	M30
P	0.5	0.7	0.8	1	1.25	1.5	1.75	2	2.5	3	3.5
b _(ref)	18	20	22	24	28	32	36	44	52	60	72
d _k	5.5	7	8.5	10	13	16	18	24	30	36	45
k _{nom}	3	4	5	6	8	10	12	16	20	24	30
s	2.5	3	4	5	6	8	10	14	17	19	22
t _{min}	1.3	2	2.5	3	4	5	6	8	10	12	15.5

NOTE: For available lengths & sizes and corresponding ASML 12NC information, please use Mechanical Vendor Components Database, BCT aClass.

Name : Hexagon socket head cap screws
Description : SCREW HXS CAP STL 8,8 A2A (d)x(L)
Material : Property Class 8.8 According to ISO 898-1
Standard : ISO 4762
Coating : Zinc plated, Transparent passivated (Zn//An/T0 acc. to ISO 4042)
Prescribed Manufacturer : Fabory (See BCT aClass for order codes)
Class Documentation : [D000575869](#)



$u \leq 2 \times P$ where P is the pitch of the thread

NOTE: Up to following lengths that mentioned in *Table 2*, screws are fully threaded as $b (ref) = l - 3 \times P$

Table 2 Maximum fully threaded screw lengths

Dimensions in millimeters

d (Thread)	M3	M4	M5	M6	M8	M10	M12	M16	M20	M24	M30
$l \leq$	20	25	25	30	35	40	50	60	70	80	100

$$b (ref) = l - 3 \times P \text{ for } l \leq \text{above lengths}$$