

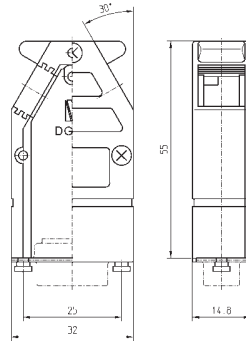
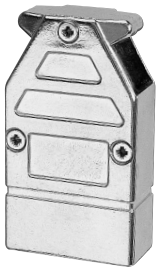
## Vertically extended hoods for external locking systems – Overall height 55mm

- EMI / RFI shielding metal hoods made from die-cast zinc
- Stable mechanical construction
- Large dimensioned space inside the hoods for the use of mixed connectors, built in electronic circuitries etc.
- Central grounding post inside the hoods
- Hoods with 2 or 3 cable openings permit a free selection of the cable input, or to make in / out parallel connections
- Unused cable openings will be EMI / RFI protected by inserting included metal plugs
- For the best EMI / RFI protection, high cable retention force and rapid assembly, **Inotec** recommends its outstanding crimp flange system
- As an alternative, cable retention may be performed by available die-cast zinc cable clamps
- Accessories: see page 36 foll.

### DG09M2

for standard 9 way or 15 way HD D-Sub

Dimensions in mm



#### Hood assembly consists of:

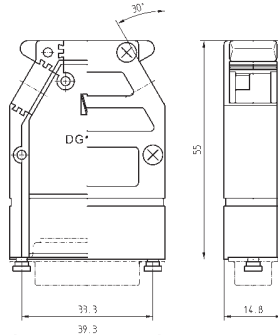
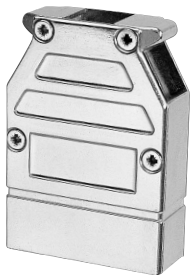
- 1 Metal hood with cover
- 1 Metal plug
- 1 Screw M2,5x4,5 for grounding post
- 3 Cover screws M2,5x7
- 2 Special screws 4-40 UNCx7,5 for connector and slide lock fastening

All screws with self forming thread

### DG15M2

for standard 15 way or 26 way HD D-Sub

Dimensions in mm



#### Hood assembly consists of:

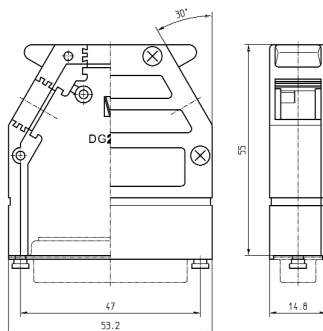
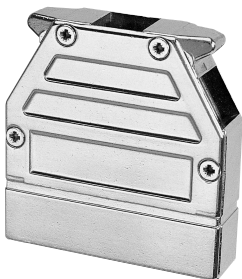
- 1 Metal hood with cover
- 2 Metal plugs
- 1 Screw M2,5x4,5 for grounding post
- 4 Cover screws M2,5x7
- 2 Special screws 4-40 UNCx7,5 for connector and slide lock fastening

All screws with self forming thread

### DG25M2

for standard 25 way or 44 way HD D-Sub

Dimensions in mm



#### Hood assembly consists of:

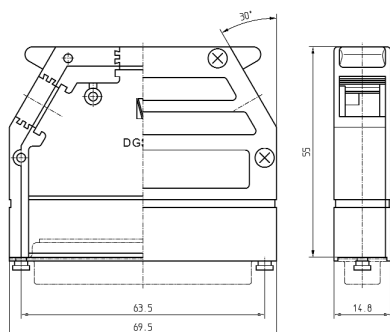
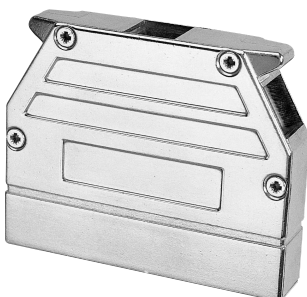
- 1 Metal hood with cover
- 2 Metal plugs
- 1 Screw M2,5x4,5 for grounding post
- 4 Cover screws M2,5x7
- 2 Special screws 4-40 UNCx7,5 for connector and slide lock fastening

All screws with self forming thread

### DG37M2

for standard 37 way or 62 way HD D-Sub

Dimensions in mm



#### Hood assembly consists of:

- 1 Metal hood with cover
- 2 Metal plugs
- 1 Screw M2,5x4,5 for grounding post
- 4 Cover screws M2,5x7
- 2 Special screws 4-40 UNCx7,5 for connector and slide lock fastening

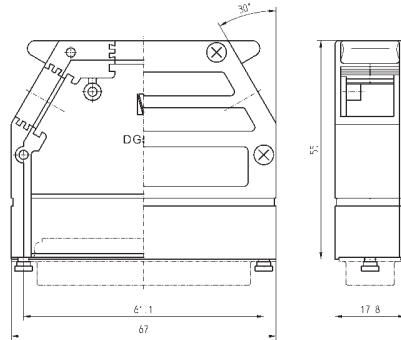
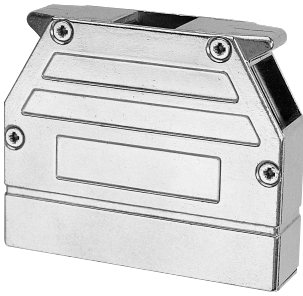
All screws with self forming thread

## Vertically extended hoods for external locking systems – Overall height 55mm

### DG50M2

for standard 50 way or 78 way HD D-Sub

Dimensions in mm



#### Hood assembly consists of:

- 1 Metal hood with cover
- 2 Metal plugs
- 1 Screw M2,5x4,5 for grounding post
- 4 Cover screws M2,5x7
- 2 Special screws 4-40 UNCx7,5 for connector and slide lock fastening

All screws with self forming thread

### Technical information and applications

The **M2** series was developed by **Inotec** for such applications which could not be covered with the **M1** series. The overall concept of the **M1** series was none the less maintained.

For applications requiring a large interior area such as mixed connectors with coaxial, high-current, high-voltage inserts or flat cable connectors, where the construction of such link-up systems requires a greater insertion depth, the **M2** series has been extended 15mm beyond that of the **M1** series.

The relatively large interior area contains a row of extra application possibilities which cannot be realized with the **M1** series, as for example: the insertion of filter arrays, electronic circuitries with cable terminals or for program plug applications etc.

The cable entries have double dove-tail grooves in which the pre-fabricated assemblies with crimp flanges or cable clamps are pressed in. Cable entries not required, are sealed by pressing in the supplied metal plugs into their positions.

