

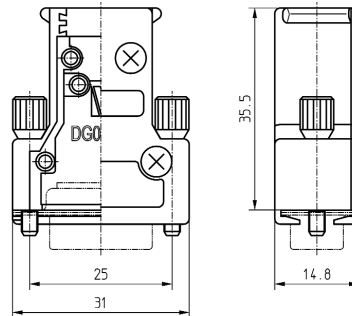
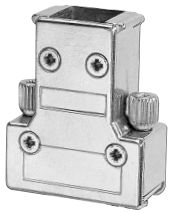
Standard hoods with jack screw locking system – Overall height max. 40mm

- EMI / RFI shielding all metal hoods made of die-cast zinc
- Stable mechanical construction
- Jack screw locking system recommended for applications under vibration conditions
- Central grounding post inside the hoods
- Hoods with 2 or 3 cable openings permit a free selection of the cable input, or to make in / out parallel connections
- Unused cable openings will be EMI / RFI protected by insertion of included metal plugs
- For the best EMI / RFI protection, high cable retention force and rapid assembly, **Inotec** recommends its outstanding crimp flange system
- As an alternative, cable retention may be performed by available die-cast zinc cable clamps
- Accessories: see page 36 foll.

DG09MS

for standard 9 way or 15 way HD D-Sub

Dimensions in mm


Hood assembly consists of:

- 1 Metal hood with cover
- 2 Jack screws 4-40 UNC^{1),2)}
- 1 Screw M2,5x4,5 for grounding post*
- 4 Cover screws M2,5x7*

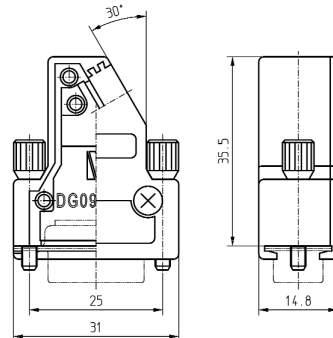
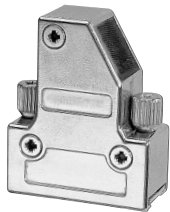
*Screws with self forming thread

¹⁾ Jack screws can also be delivered with metric thread **M3**.
Part No. DG09MS-3
²⁾ Please contact factory for other jack screw types

DG09MS-1

for standard 9 way or 15 way HD D-Sub

Dimensions in mm


Hood assembly consists of:

- 1 Metal hood with cover
- 2 Jack screws 4-40 UNC^{1),2)}
- 1 Screw M2,5x4,5 for grounding post*
- 3 Cover screws M2,5x7*

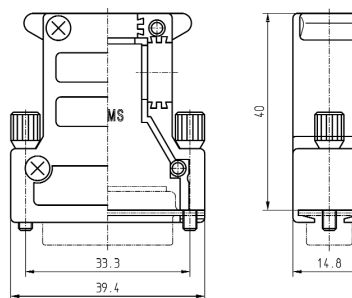
*Screws with self forming thread

¹⁾ Jack screws can also be delivered with metric thread **M3**.
Part No. DG09MS-1-3
²⁾ Please contact factory for other jack screw types

DG15MS

for standard 15 way or 26 way HD D-Sub

Dimensions in mm


Hood assembly consists of:

- 1 Metal hood with cover
- 1 Metal plug
- 2 Jack screws 4-40 UNC^{1),2)}
- 1 Screw M2,5x4,5 for grounding post*
- 4 Cover screws M2,5x7*

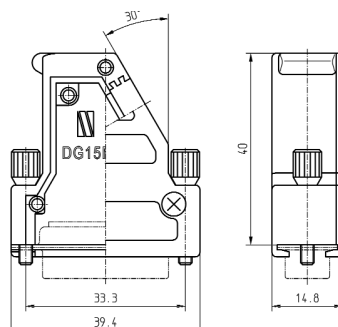
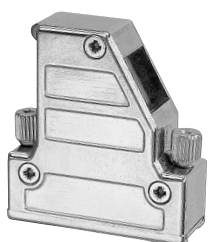
*Screws with self forming thread

¹⁾ Jack screws can also be delivered with metric thread **M3**.
Part No. DG15MS-3
²⁾ Please contact factory for other jack screw types

DG15MS-1

for standard 15 way or 26 way HD D-Sub

Dimensions in mm


Hood assembly consists of:

- 1 Metal hood with cover
- 2 Jack screws 4-40 UNC^{1),2)}
- 1 Screw M2,5x4,5 for grounding post*
- 3 Cover screws M2,5x7*

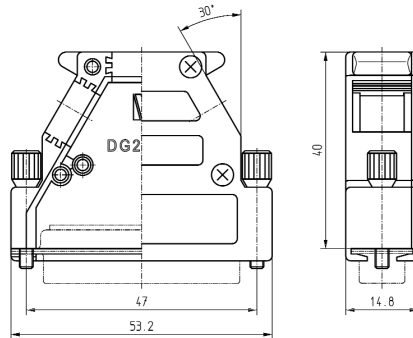
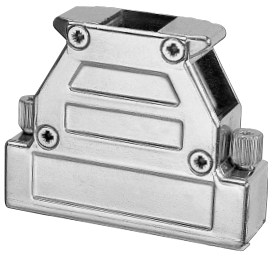
*Screws with self forming thread

¹⁾ Jack screws can also be delivered with metric thread **M3**.
Part No. DG15MS-1-3
²⁾ Please contact factory for other jack screw types

Standard hoods with jack screw locking system – Overall height max. 42mm
DG25MS

for standard 25 way or 44 way HD D-Sub

Dimensions in mm


Hood assembly consists of:

- 1 Metal hood with cover
- 2 Metal plugs
- 2 Jack screws 4-40 UNC^(1,2)
- 1 Screw M2,5x4,5 for grounding post*
- 4 Cover screws M2,5x7*

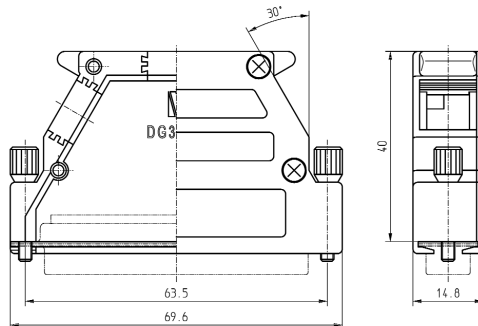
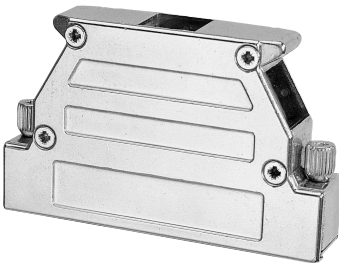
*Screws with self forming thread

¹⁾ Jack screws can also be delivered with metric thread **M3. Part No. DG25MS-3**
²⁾ Please contact factory for other jack screw types

DG37MS

for standard 37 way or 62 way HD D-Sub

Dimensions in mm


Hood assembly consists of:

- 1 Metal hood with cover
- 2 Metal plugs
- 2 Jack screws 4-40 UNC^(1,2)
- 1 Screw M2,5x4,5 for grounding post*
- 4 Cover screws M2,5x7*

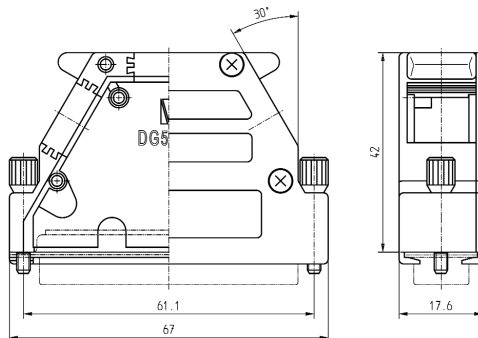
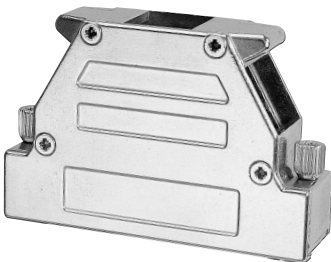
*Screws with self forming thread

¹⁾ Jack screws can also be delivered with metric thread **M3. Part No. DG37MS-3**
²⁾ Please contact factory for other jack screw types

DG50MS

for standard 50 way or 78 way HD D-Sub

Dimensions in mm


Hood assembly consists of:

- 1 Metal hood with cover
- 2 Metal plugs
- 2 Jack screws 4-40 UNC^(1,2)
- 1 Screw M2,5x4,5 for grounding post*
- 4 Cover screws M2,5x7*

*Screws with self forming thread

¹⁾ Jack screws can also be delivered with metric thread **M3. Part No. DG50MS-3**
²⁾ Please contact factory for other jack screw types

Standard hoods with jack screw locking system

- EMI / RFI shielding metal hoods made of die-cast zinc
- Stable mechanical construction
- Central grounding post inside the hoods
- Hoods with 2 or 3 cable openings permit a free selection of the cable input, or to make in / out parallel connections
- Unused cable openings will be EMI / RFI protected by inserting included metal plugs
- For the best EMI / RFI protection, high cable retention force and rapid assembly, **Inotec** recommends its outstanding crimp flange system
- As an alternative, cable retention may be performed by available die-cast zinc cable clamps
- Jack screws with spring washers
- Special screws for improved handling
- For applications under hard vibration conditions
- Accessories: see page 36 foll.

DG09MS-61

for standard 9 way or 15 way HD D-Sub

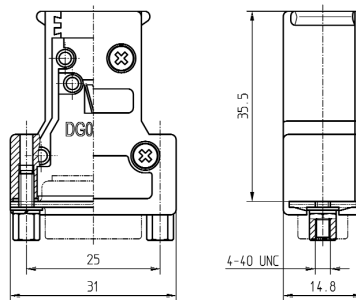
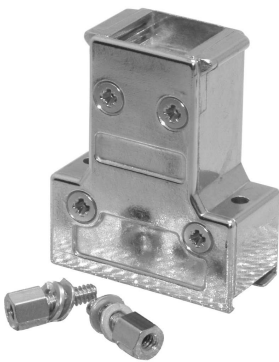
Dimensions in mm

Hood assembly consists of:

- 1 Metal hood with cover
- 2 Hexagonal female jack screws 4-40 UNC¹⁾
- 2 Washers
- 2 Spring washers
- 1 Screw M2,5x4,5 for grounding post*
- 4 Cover screws M2,5x7*

*Screws with self forming thread

¹⁾ Jack screws can also be delivered with metric thread **M3**.
Part No. DG09MS-63



DG09MS-80

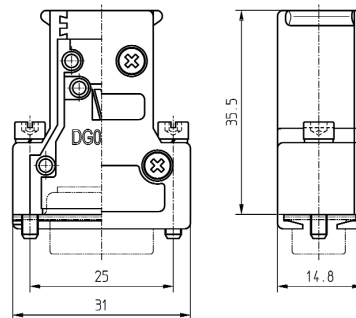
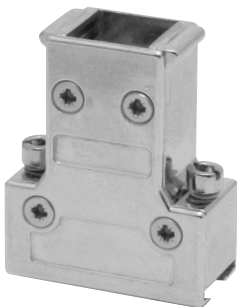
for standard 9 way or 15 way HD D-Sub

Dimensions in mm

Hood assembly consists of:

- 1 Metal hood with cover
- 2 Jack screws 4-40 UNC
- 2 Spring washers
- 1 Screw M2,5x4,5 for grounding post*
- 4 Cover screws M2,5x7*

*Screws with self forming thread



Also available for standard 15 / 25 / 37 and 50 way D-Sub

DG09MS-1-80

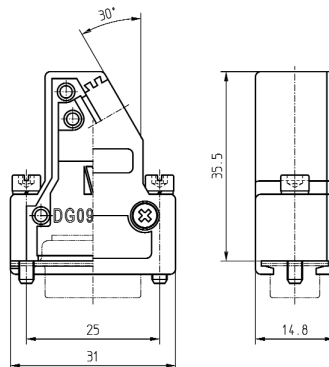
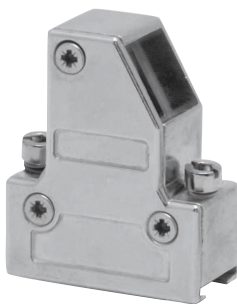
for standard 9 way or 15 way HD D-Sub

Dimensions in mm

Hood assembly consists of:

- 1 Metal hood with cover
- 2 Jack screws 4-40 UNC
- 2 Spring washers
- 1 Screw M2,5x4,5 for grounding post*
- 3 Cover screws M2,5x7*

*Screws with self forming thread



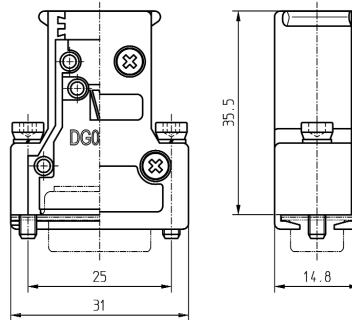
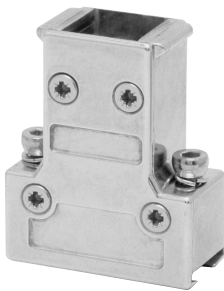
Also available for standard 15 way D-Sub

Standard hoods with jack screw locking system

DG09MS-90

for standard 9 way or 15 way HD D-Sub

Dimensions in mm

**Hood assembly consists of:**

- 1 Metal hood with cover
- 2 Jack screws M3
- 2 Spring washers
- 1 Screw M2,5x4,5 for grounding post*
- 4 Cover screws M2,5x7*

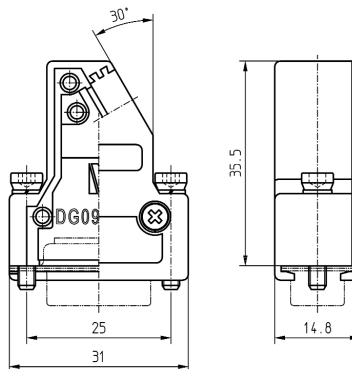
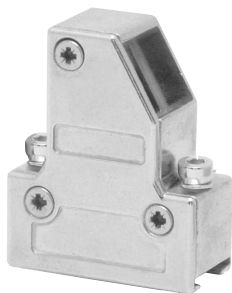
*Screws with self forming thread

Also available for standard 15 / 25 / 37 and 50 way D-Sub

DG09MS-1-90

for standard 9 way or 15 way HD D-Sub

Dimensions in mm

**Hood assembly consists of:**

- 1 Metal hood with cover
- 2 Jack screws M3
- 2 Spring washers
- 1 Screw M2,5x4,5 for grounding post*
- 3 Cover screws M2,5x7*

*Screws with self forming thread

Also available for standard 15 way D-Sub

Standard hoods with jack screw locking system

Robust metal hoods made out of die-cast zinc with excellent protective characteristics against destructive radiation for D-Sub connectors corresponding to DIN 41 652 / MIL-C-24308 and IEC 807-2. With the MS series **Inotec** developed hoods with a jack screw locking system to be specifically applied where cables are not required to be frequently coupled and where a secure locking is required. Through the play free connector link-up, this kind of locking is especially recommended for applications under vibration conditions. The hood width of sizes 9-37 is 14,8mm and allows a side by side installation when using the small slide-in units (15,08mm) of a 19" rack-system.

In order to fulfill most of the application tasks, this consists of 7 different hoods. There are gripping shoulders on the hood end which enable a trouble-free extraction of the connection even with tightly packed aligned hoods, therefore avoiding that bad habit for pulling on the cables.

The interior space is large enough for the most usual forms of cabling. Hoods larger than size 15 possess 3 cable entries and also permit the looping through of cables. The cable entries are lined with double dove-tail grooves in which the pre-fabricated crimp flanges or cable clamps with the corresponding cable are pressed in. Cable entries not required are sealed with the supplied metal plugs.

