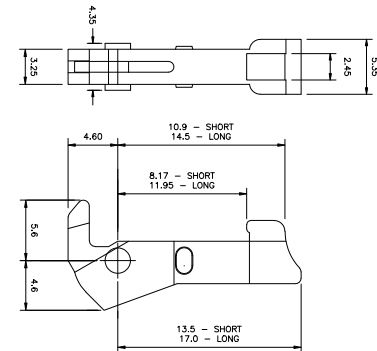


No. of Contacts	A	B
10	10.16	32.16
14	15.24	37.24
16	17.78	39.78
20	22.86	44.86
26	30.48	52.48
34	40.64	62.64
40	48.26	70.26
50	60.96	82.96
60	73.66	95.66

C = 2.9 or 4.5



Specifications

Material

Contacts: Phosphor Bronze
Insulator: PBT, glass reinforced, UL94V-0

Electrical

Current Rating: 1.0A
Contact Resistance: 20mOhm max.
Insulation Resistance: 5000MOhm min.
Withstanding Voltage: 1000V AC for 1 minute
Operating Temperature: -40°C to +105°C

SPMHxxA-3000

Not used

Latches:

Pin length:

Requirement level:

Style:

No. of contacts

0 (Standard)

0 = Without latches

1 = With short latches

2 = With long latches

0 = 2.9mm (Standard)

1 = 4.5mm

1 = RL1 = gold plated, 500 mating cycles

2 = RL2 = gold plated, 250 mating cycles

3 = RL3 = gold plated, 50 mating cycles

4 = RL4 = tin plated, 50 mating cycles

A = Angled

